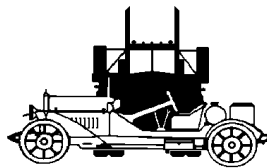


Miniature Auto



Warren Piesse's Champion of Champions Winning
Seddon Atkinson Strato 6x4

Miniature Auto is the bi-monthly newsletter of
The New Zealand Model Vehicle Club (Inc)

A publication for and by collectors and builders of model vehicles

April 2001 Issue 191

NATIONAL EXECUTIVE

<u>PRESIDENT</u>	Lee Tracey 27B Weka St Frankton Hamilton Ph (07) 847 7614 Email leetra@ihug.co.nz
<u>VICE PRESIDENT</u>	Graeme Robertson 121 Grant Rd Otatara RD 9 Invercargill Ph (03) 213 1354 Fax (03) 213 1454
<u>SECRETARY</u>	Eric Brockie P O Box 1356 Dunedin Ph (03) 488 1048
<u>TREASURER</u>	Stan Beavon P O Box 9264 Christchurch Ph (03) 347 4355 Fax (03) 347 4357
<u>EDITOR</u>	Lee Tracey 27B Weka St Frankton Hamilton Ph (07) 847 7614 Email leetra@ihug.co.nz

REGIONAL DELEGATES

<u>WELLINGTON</u>	Ian Cousins. P O Box 12-057 Thorndon Wellington Ph (04) 934 5172
<u>MARLBOROUGH</u>	Warren Piesse. 19 Hutcheson St Blenheim Ph (03) 578 3683
<u>CANTERBURY</u>	Peter Haack. 77 Moffat St Christchurch 4 Ph (03) 349 6164
<u>OTAGO</u>	Graham Patterson. 103 Musselburgh Rise, Musselburgh Dunedin. Ph (03) 455 0600
<u>SOUTHLAND</u>	Stephen Kelly. 78 Lithgow St Invercargill Ph. (025) 617 1138

Please address all correspondence to the Secretary.
Magazine articles and related correspondence to the Editor.
Change of address to the Secretary.

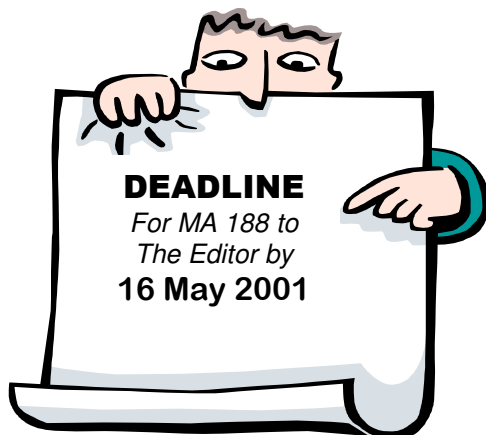
~~CONTENTS~~

Editorial	Page 4
President	5
Branch Reports	6
Competition	10
Model Scrutineer	11
A Champion Model	12
A Tale to be Told	13
British Car Corner	14
Help Wanted	16
Fire at the AGM	17
That's News? That's News!	18



Contributions to

**The Editor
27B Weka St
Frankton
Hamilton**



*The views and opinions expressed in Miniature Auto are not necessarily those held by the **NEW ZEALAND MODEL VEHICLE CLUB (Inc)** and the **Executive**, and no responsibility can be accepted for them by the **Club** and/or the **Executive***

Club Website: www.nzmvc.in-newzealand.com

EDITORIAL

Having just attended the AGM in Blenheim I would like to say thank you to all the people involved in organising the event. I know that I enjoyed myself and it was great to catch up with members from afar whom I often only get to see once a year. Now I only have to hope that I can get some holidays at this time again next year so as to see you all in Wellington. Since the AGM I have had time to put some thoughts together on a couple of subjects, and I put them up for discussion.

While the last thing we need is extra competition classes I believe the scope of this class should be widened to include any kitset where the owner has not completed 100% of the work themselves. This would let a member who has purchased a kitset already assembled, or one where perhaps they had got someone else to paint it for them.

At the moment a member can enter any diecast model in their collection as they are covered by classes 27 and 31. By widening the scope of class 32 it would offer the same freedom to the owner of any kitset model without altering the original intention of the class.

The other matter that I have thought about is that which was raised by 'The Bishop of Sefton' alias Carville Stewart about what the club needs to do both to attract and retain members. At the meeting we talked about lots of serious issues relating to this and some good ideas were raised, but after further thought I believe that one thing we all need to, and can, do is make being a member of our club FUN. As was discussed the reasons for joining or remaining a member are now very different to what they were many years ago.

People are now bombarded with so many options of how to spend their leisure time and money that they will only be a part of something they really are enjoying, and everyone enjoys having fun. Lets try to inject more humour into everything, meetings, newsletter etc.

I realise that we need our serious side as well and models and modeling should always remain our core, but times change and we need to change with them. Words are always easier than actions but if we all think and contribute then I am sure the club can once again prosper. After all you only get out of anything what you put into it, so contribute lots to your branch and get lots out of it, but most of all have FUN doing so.

Howard Brockie

PRESIDENT'S PIECE

Hello Again,

Sorry about the delay in getting this out but I am having some problems with my scanner which are taking longer than I would like to get sorted.

Recently you should have discussed a letter from me at your local branch meeting re club direction, what we do for new members etc. I have just received a letter that was sent to one of our delegates from 'Could have been a Member'.

While not wishing to reprint the entire letter there are certain points in it that strike to what I was trying to get at with my letter to the Executive. The guts of this persons letter was that he had attended a few meetings of his areas Branch but was disappointed in that the only interest shown seemed to be in Diecast (he is a kit builder) and "anything else that was taken along... you seemed to be totally ignored." "I heard it said by a couple of others that it was a waste of time being there because unless you collected Diecast no one wanted to know you."

He also seemed to be under a few misconceptions about the set up and purposes of the club.

This should serve as a 'heads up' to all branches as the Branch this person attended has one of the higher concentrations of kitset builders within the club. I know that these days we are primarily a Diecast club, but lets not forget that we are supposed to be all encompassing, and that especially with guests and prospective new members, we need to take time to ensure everybody feels their area of interest is 'important'. When was the last time your branch did something specifically focused on the needs of the kit builders, or any Special Interest Group' for that matter?

I know it is easy for us to fall into the trap of doing what is comfortable and familiar, but if we are to be an all encompassing club as per our constitutional aims then it is important that we remember to cater for all members, or potential members needs. Otherwise we might as well just become the New Zealand Diecast Club.

Lee Tracey

BRANCH REPORTS

WELLINGTON

Model Railway and Toy Show

Wellington Branch were invited to display as part of the Model Railway and Toys Show organised by the Marklin Model Railway Club. It was held in the Upper Hutt Civic Hall on Sat 10th and Sun 11th of March. The complex comprises several areas and the main hall is large. Setup began on Friday night with the arrival of the first train layouts, the Lego Train layout and display, our static display and items on display by the Meccano Club. Some of the Trade stands also set up on Friday night. Sadly the Doll Collectors pulled out at the last minute so it wasn't as "rounded" a display as it could have been.

I arrived around 7:30pm and since I was by myself it took me until nearly 9:00pm to drag in my collapsible display stands (thanks DAD!) and to fill the first cabinet with MB 38s (over 90 of them chosen to provide that big splash of colour). I then proceeded to fill the second cabinet with Russian made models and the third with Road Champs 1/43 scale). I left around Midnight and headed back to Wellington for some sleep.

Saturday morning I was off again to Upper Hutt to help Ron Ford and Tony Robinson set up their models. Tony brought along a good selection of Fire related models ranging from handcarts to sleds to large ladder appliances. He also had a new kit on hand to work on although in the end little work was done on it as he spent a great deal of Saturday morning and Sunday talking to everyone who showed an interest in the display (see photos). Ron had a great display of Micro Models on hand and he felt it only fair to bring along a good selection of Marklin model cars and trucks too! I added to our display by using a spare table on which I positioned a few 1/87th scale models (HO) to catch the eye of the rail modellers! I shot through around Noon to work in the shop but I understand the day was well patronised by the public and breakeven point for the display was achieved around 4 pm.

Unfortunately my first attempt at getting photos on a borrowed digital camera proved a disaster as they all came out fuzzy. So Sunday saw me arrive bang on opening time at 10:00 am ready to try again. The hall filled steadily and Tony and I almost talked ourselves hoarse by the end of the

day. There were plenty of people interested in specific types of model car/truck and the ever prevalent VW collectors were off to be found drooling over Ron's Marklin VWs. There seemed to be a large number of grandparents with grandchildren and the phrase "Hands behind your backs please" was heard with great regularity as they moved between the various displays. Hats off to the Marklin guys who made sure there were a few hands on displays for the kids including Thomas type things. Things petered off slightly around Noon but there was a surge of people around 1:30 pm that saw the venue well patronised until 4:00pm when the display closed. Within an hour the only things left in the hall were my models (as I was still packing them up) and a few Marklin club members who were on cleaning duty! I was the last exhibitor to leave (around 5:30pm) and would have been there longer if Ron hadn't helped pop things back into their boxes - Thanks Ron! Sadly my second attempt at taking photos was no better than my first but I did manage to get a few shots in focus! These will be displayed on the Club website (<http://www.nzmvc.in-newzealand.com>) and Lee may copy some for inclusion in the magazine.

From a Club point of view it was a worthwhile effort as it helped expose the Club to a wider range of people than we normally talk to and it was interesting to see the number of people who collect on more than one front. A number of the people I spoke to indicated they will be popping along to the model swapmeet next week so Ron and I will have another opportunity to talk to them then.



"They went thattaway"
Tony Robinson helping some of the large crowd



Ron's Micro and Marklin models

SOUTHLAND

At the February meeting held at Stephen Kelly's home it was decided to change the name of the May competitions to 'The Southland Branch Competitions' thus allowing them to be shifted outside of May if required to prevent clashes etc. The branch is also looking for a suitable new name for the August Competitions, which, unlike May, are open to members from other Branches. Suggestions to Stephen Kelly please.

Stephen Kelly

OTAGO

Waitangi Weekend in Alexandra

As has been the case for a number of years I have been in Alexandra on the weekend closest to Waitangi Day, and this has also been a time to hold a meeting for the Central Otago members. This year the meeting was held on The 6th at the Evan Blanch residence in Clyde.

On arrival at Evan's we were given a sheet of paper with some questions on it to do with Evan's collection which is now displayed in his completed model room.

The paper said

WELCOME TO THE "ROOM"
NOW TRY THIS
HOW MANY????_____

Model A fords.____ Japanese Vehicles _____ French Vehicles____ Italian _____ 4WD _____ Chrysler _____ Motorcycle _____ and so on. First Prize is a weekend on the moon sponsored by HOKONUI MOONSHINE PRODUCTS LTD.

It made members look at the collection to see how they could come to the correct numbers of each type. The two members who were closest were Graeme Borley and Robin Austin.

The competition that we had arranged for the night was any vehicle beginning with the letters S for Summer or W for winter. Some members imagination went a bit astray in their meaning of those two letters, but the competitions were there as some fun and the results were as follows.

S for Summer

- 1st. Trevor Bellaney – Snow Plough
- 2nd. Trevor Bellaney Steam Crane

W for Winter

- 1st. Graeme Borley War Machine Jeep
- 2nd. Graeme Borley Wind Up Truck.

When I returned to collect my trailer from Evan a couple of days later a letter was pinned to the trailer which read.

THE SOCIAL SIDE OF CENTRAL OTAGO

Some members idea of summer and winter seem somewhat astray and while Central Otago weather can throw some surprises at you? BUT a Snow Plough for summer and an open top Jeep for winter BBBRRRRRR. It was explained as a wind up version W, but it was no wind-up it could be said SPRING powered which is almost Summer.

I am JOE KING and I am not JOKING.

Annual USA Day Display

As usual we again displayed at this Annual event and models were supplied by Graham Patterson, Kevin Hutcheson and Eric Brockie

The display was somewhat smaller than our usual display at this event, brought about by the organisers of the event changing the venue. Up until this year the event has always been staged at Forrester Park but was this year changed to Tahuna Park.

The change of Venue meant that we were unable to set up the display area the night before because at Tahuna Park there is no inside area to put displays such as ours.

We did not want to put a large amount of models on our display because of the possibility of the weather turning to rain, however the day remained as bright sunshine all day. In the case of outside displays a tent or gazebo is needed to keep both the sunshine or the rain off the models.

Again the display though smaller was good and attracted a lot of interest as usual.

Eric Brockie

COMPETITION

A good response this month with several answers of varying degrees of accuracy. The winner is Warren Piesse from Marlborough Branch

Last Month's answers were

1. Tamiya
2. Jody Sheckter
3. The tandem wheels were at the rear
4. No. 158

Corgi 161 & 162 were issued as 'Elf Tyrrell Project 34'

This month Garry and the team at Acorn Models (37 Manchester St Christchurch Ph 03 374 6000 & 381 Great North Rd Auckland Ph 09 360 0233) have supplied the Challenger Racing Buffalo Boots sponsored Ford Mustang from the 1993 German Touring Car Series.

The Questions:

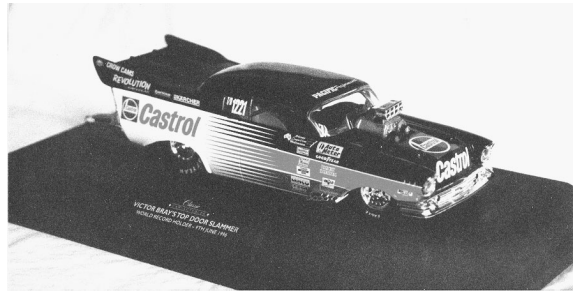
What 'products' are the following sponsors associated with

1. Warsteiner
2. West
3. Repsol
4. Hooters
5. Tide

Entries to the Editor(27B Weka St, Hamilton) by 16 May please. Should there be more than one correct entry then all correct entries will go into the editorial hat from which a winner shall be drawn.

Good Luck

MODEL SCRUTINEER



CLASSIC CARLECTABLES

1/24 Scale Victor Bray 57 Chevy Top Doorslammer

Although not well known in New Zealand Victor Bray is a legend within Australian drag racing and his $\frac{3}{4}$ track burnouts have drawn him legions of fans. Starting out in a street driven 57 Chevy he has progressed to become 'The Worlds Fastest Tomato Farmer' in this Murray Anderson Built creation. With a 2500 hp alcohol powered engine and a body, complete with windows, that weighs only 65kg it really is a state of the art car running 6.29 sec and 225 mph for the $\frac{1}{4}$ mile.

The model is a good replica although I wonder if the chassis and wheelie bar frame are slightly heavy for the scale. The motor suffers from a lack of detail although most of the motor is not visible anyway. The interior is very basic but with the cars low roofline you can see very little inside anyway.

The body is well proportioned and finished although some of the chrome plating could have slightly better finish. The overall impression despite the above comments is very good with the biggest fault being the lack of detail on the motor.

However this is a model that is unlikely to be made by anyone else and having watched this car run many times including at the meeting when it set the world record it was a must for me, but it would look good on anyone's shelf.

Also being 1/24 scale and easily pulled apart (2 screws) it lends itself to some extra detailing and that is just what I intend to do, and without a lot of work this could be turned into a great model.

Howard Brockie

ACHAMPION MODEL

Building the Seddon Atkinson Strato 6X4

I first saw this truck at the Eastern Zone Truck Show, Blenheim 1992 and knew I had to build a model of it. At the truck show it was displayed in it's outstanding Mainfreight colours as a tractor unit, without it's B train trailers. After many photos I had information to build the truck.

The Seddon Atkinson Strato shares the same cab as the Leyland DAF 95 and DAF 95, as DAF trucks bought Leyland trucks. So Leyland DAFs were supplied for the British market as well as to Seddon for the Atkinson. Italeri made model kits of both the DAF & Leyland DAF.

Starting with the DAF 95 kit I opened the drivers door with a razor saw and hinged it, converted the dash to right hand drive and fully fitted out the interior. The front bumper, sun visor and exhaust system were altered. Fuel tanks, stone guard and alloy rear guards were all scratch built.

The trailers I measured and photographed in Christchurch at a later date. These were then built using chequered plate plastic card for the decks. Plastruct beams and channels were used to build the trailer chassis. Scratch built suspension and axles were added. Small tyres on the trailer were made from fibreglass by a fellow truck modeller. These were made in a rubber mould from a master derived from a modified kit wheel and tyre. Again alloy guards were used on the B train trailers.

The entire unit was air brushed in Mainfreight colours of white and blue on the cab with a blue truck chassis and trailers. Lettering was done with computer cut letters and leterset.

The load on the first trailer was a cut down 40ft Italeri container, and on the rear trailer a Heller Bobkit Massey Ferguson kit model.

This model has won and placed in Model Truck competitions at shows, . as well as the 1999 & 2001 NZMVC AGMs, It first competed in 1992 as a truck only, until the trailers were built in 1993, winning first time in both configurations.

A TALE TO BE TOLD

This is a little story that involves our venerable member Eric Brockie whose name will not be mentioned as it may raise sensitive issues.

Now this member as usual organised a meeting of the Central Otago members as you will have read earlier. The Honourable member was sprung by a local in the Alexandra Warehouse toy car section with his hands full on Waitangi Day. Remonstrations took place and it was pointed out the unfairness of shopping here when there is a perfectly good Warehouse in Dunedin for Dunedinites. It was then realised that it was half price day as well which compounded the crime.

An explanation was given that as no models had been brought from home and something beginning with an S and a W was needed for the meeting that evening.

One of the items was a nice little Suzuki Baleno Rally Car (S – get it) and this was put down on the shelf while discussions were going on. This was followed by a general inspection of the shelves and animosity was forgotten.

When it came to the recovery of the little Suzuki it was missing from the shelf and was last seen in the hands of a little old Granny type person standing at the till checkout.

It would not be often that the member from Dunedin gets beaten in a deal at The warehouse, where everyone as you know gets a bargain. If anyone is interested Eric probably now has a 's'chool bus and a 'w'recker tow truck for sale. At half price of course???

Evan Blanch

BRITISH CAR CORNER



Franklin Mint 1/24 scale Bentley

The earliest model Bentley I can find was made by Dinky in 1938. Shown as a "Bentley 2 Seater Sports Coupe" with driver and passenger. This same casting was used before in 1934 by dinky but was known and listed as a "Sportsman Coupe". The model was used again after the war and ran through to the late 1940's. Yellow, blue and several two tone combinations were used throughout the production run. Dinky 194 is listed as a Bentley S series coupe and is a convertible model in 1/43rd scale, available in grey or cream and red, and is shown with a driver. This model was available in the early 60s through to 1967. When Matchbox took over the Dinky name in the late 1980s a 1955 Bentley R Type Continental was re-released about 1990. This has an unusual styled 2-door body with a fastback rear end. These are well cast 1/43rd scale models with windows and complete interiors with steering wheel, seats etc, nice chrome wheels, bumpers, grill, headlights and driving lights. One I have is in light silver/blue with dark blue interior, and the other is a dark royal blue with light tan interior. These are well proportioned and accurately detailed models.

In 1958 Matchbox released the first of their Le Mans Bentley's at No 5 in the Yesteryear range. Painted green with black mudguards, red seats, gold radiator surround, and imitation wire spoked wheels, this little 1/55 scale model is known as a first series model and is very sought after on the collector market. In 1962 the smaller Bentley was relaced with a larger 1/52nd scale model of the same car painted in the same colour green. The seats and tonneau cover were moulded in either green or red plastic. Several variations occurred throughout the 6 year production run.

In 1985 another 1930 4 1/2 litre supercharged Bentley was introduced at No.2 in the Yesteryear range. At 1/40th scale it is the largest of the Bentleys. It was dur-

ing the manufacture of this model that production moved from England to Macau, which has involved several changes to body colours (green, blue and burgundy), and to the use of more plastic in the seats, wheels, tonneau, mudguards, bonnet straps etc. With the use of plastic on these later models more detail and a wider range of colours and colour combinations can be achieved. Being a Models of Yesterday collector, I have 11 of these Bentleys in my collection.

Another of these Bentleys I have is the Corgi 1927 3 litre Bentley, made in 1985 as a Special Edition it is a re-run of the Corgi Classics originally made from 1964-67. The one I have is maroon with tan interior, silver steering wheel, spoked wheels and radiator surround with chassis springs and accessories in dark brown with black tonneau cover. This is an excellent little model, well cast with good detail to the body and chassis. The original Bentleys of the Corgi Classic range were available in about 5 different colour variations, some had hoods raised, and some down.

In 1961 Corgi released at No. 224 a Bentley Continental Sports saloon in two tone green, gold, and grey, black. Production of this 2 door model ended in 1966. 1971 saw a T series Bentley released at No.274 in pink. A few years ago Corgi brought out a series of cars called "Cars of the 50s and 60s", I have the Bentley R series model. Painted black, it is a little drab in it's appearance. It does have an opening boot lid, and the bonnet lifts to show the reasonably detailed engine. Good chrome work is used on the wheels, grill, bumpers and headlights but a cheap plastic tan interior and a cream plastic convertible roof shown in the closed position do little for the model.

A few other model makers have done Bentleys as well. Brumm, an Italian manufacturer of 1/43rd scale models, has made three 1929/1932 Blower Bentleys in the late 80s, and Spot On have produced another 4 1/2 litre Bentley Supercharged in 1964, and a Sports Saloon from 1959-63. In 1995 Franklin Mint released a 1929 Bentley in 1/24th scale. Done in the usual green colour these large Franklin Mint cars are really superb models with excellent detail.

Russell Corbett



Franklin Mint Mk 6 Bentley

Photos courtesy of Diecast Car Collectors Zone www.diecast.org

HELP WANTED



A chap brought the above photo in to the Otago Branch Pedal Power Exhibition and I would like to try and see if someone can identify it.

It was given to the present owner second hand in 1935. It is of steel manufacture, 24¼ ins long, 7½ ins wide and 7¼ ins high. Front wheels turn from the steering wheel and the wheels are solid metal with the tyres painted grey. The wheels and chassis are red and the body and deck are black. Cast into the model below each door opening are the words INTERNATIONAL SPEED TRUCK.

Any help to identify the manufacturer and year of manufacture would be appreciated.

Eric Brockie, PO Box 1356, Dunedin.

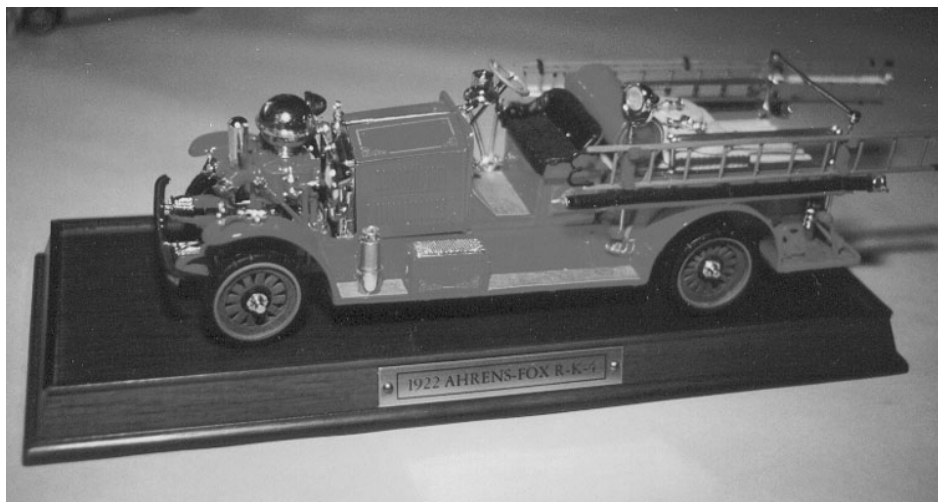
(Sorry for the long delay Eric –Ed)

FIRE AT THE AGM



Above: Warren Piesse's Mercedes Ladder Fire appliance in Class 21 based on a Christchurch appliance.

Below: Eric Brockie's Class 26 winning Ahrens Fox



~~THATS NEWS?THATS NEW!~~

AUTOart Germany 1/43 Diecast

Aston Martin DB7 Vantage 3 cols

Jaguar XJR 3 cols (av)

Jaguar C Type Road 3cols (av)

Jaguar XJ8 3 cols (av)

CORGI UK 1/50 Diecast from various Commercial ranges

CC12202 Scania Fridge Dukes (4/01) CC12203 Scania L/Loader Stobart (av)

CC12502 Atkinson Borderer F/Bed StobartCC11902 ERF EC C/Side Castle Cement (6/01)

CC 12002(?) MAN 3 axle Heavy Tractor, King Trailer and Crusher

CC12002(?) Scammell Crusader Sheeted Flatbed Eastern BRS

CC12403 Volvo FH 4 axle Ballasted Tractor X2, Nicholas Bogie & Fert Drier Heanor (av)

CC12404 Volvo Globetrotter, Jeep Dolly & King Trailer (5/01)

CC25901 AEC Routemaster Metroliner (4/01)

CC20001 Sentinel Dropside Wagon, Trailer & Load Tarmac (6/01)

CC20101 Fowler B6, Low Loader & Boiler Load Norman E Box (av)

CORGI UK 1/50 Diecast US Premier Range

US55103 Diamond T989 Girder Trailer & Transformer 'Gerosa' (av)

US55702 Kenworth W925 Low Loader & Boiler Load (av)

US 50705 Mack LS Logger 'Litefoot Logging' (4/01)

US51401 International Transtar Girder Load (5/01)

US50501 Seagrave Anniversary Pumper Columbus OH (4/01)

US50502 Seagrave Anniversary Pumper Tampa FL (6/01)

US 53802 Mack CF Tower Ladder San Francisco (av)

CORGI UK 1/36 Diecast

New Mini Cooper 3 cols

5508 Mini Seven Racing Diorama

4509 Mini 40 'End of the Road'

CC82204 Manx Rally Mini 'Stobart'

CORGI UK 1/64 Diecast

CC86603 Scania C/S 'Sunpride' (av)

CC86701 Volvo C/S 'United Glass' (av)

CC86604 Scania C/S 'KNAUF'

CC86702 Volvo C/S 'The Mirror' (av)

EAGLES RACE China 1/43 Diecast

2001 Dodge Viper 3 cols

Porsche 911 SC 80 TdC 1st

Saab Sonnet III 2 cols

Renault Clio 16S 2 cols

Renault Super 5 GT Turbo Phase 2 3 cols

Land Rover S3 109 Soft Top 2 cols

Porsche 911 SC 3L 78 MC 1st

VW1303 Coupe 2 cols

Renault 5 GT Turbo 89 Ivory Coast 1st

EAGLES RACE China 1/18 Diecast

72 Porsche 911 2.4 Olive	40 Ford Deluxe Coupe Olive
Land Rover S2 Pick Up W. Sussex Fire	Land Rover S3 109 Pick Up Light Brown
Land Rover S3 Hard Top Dorset Fire	

EBBRO Japan 1/43 Diecast

Toyota Land Cruiser FJ40V Soft Top	Nissan Skyline GTR R34 JGTC 'Loctite'
Nissan Skyline GTR R33	Nissan Sky Line KPGC110
Mazda RX 7 series 1 3 cols (4/01)	

TRAX Australia 1/24 Diecast

TRL4 HT Monaro GTS 350 Sebring Orange TRL4B HT Monaro GTS 350 Verdoro Green

TRAX Australia 1/43 Diecast Oil & Petrol Mini Series

TR25E FX Ute C/wealth Oil Refineries	TR25F FX Ute Golden Fleece
TR27C XK Falcon Van Kangaroo	TR29C XK Ute Neptune Oil Co

SUNNYSIDE China Various Scales Diecast

SS5725 1999 Toyota Vitz (Echo) 1/25	1970 Chevy El Camino SS454 1/38 6 cols
SS5730 1969 Corvette Convertible 1/32	SS5731 1967 Chevrolet Camaro Z28 1/34
SS5733 1996 Porsche Boxster 1/30	SS5734 1999 Ford Focus 1/30
SS5738 96 Mercedes SLK230 H/T 1/28	SS5739 96 Mercedes SLK230 Conv 1/28
SS6708 97 Mercedes A Klasse 1/24	SS7722 32 Ford V8 3 window Coupe 1/24
SS7725 68 Corvette L88 1/24	SS7726 49 'Ford' Mercury Custom 1/28
SS7731 67 Chevy Camaro Z 28 1/24	SS8707 73 Pontiac Firebird Trans Am 1/24
SS5111 Toyota RAV4 Conv. 1/24	SS5604 97 Ford F150 1/40
SS7603 37 Ford Pick Up 1/24	SS8704 55 Ford Crown Victoria Coupe 1/24
SS8705 55 Ford Crown Vic Conv 1/24	SS9603 Police Force (Chev Suburban?) 1/24
SS5603 56 Ford F100 1/36	SS5727 53 Buick Skylark Conv. 1/38
SS7601 56 Ford F100 1/24	SS8151 52 GMC Wrecker 1/34
SS8706 Shelby GT500KR 1/24	

ERTL USA 1/18 Diecast

69 Baldwin Motion Camaro Red (av)	69 Baldwin Motion Nova White (av)
70 Baldwin Motion Camaro Black (av)	70 Baldwin Motion Chevelle Green (av)
34 Ford American Graffiti (5/01)	57 Chevy American Graffiti (5/01)
60 Ford Starliner Ohio SHP (5/01)	64 Chevy Impala Ankeny IA Police (5/01)
69 Hurst AMX 'Petes Patriot' S/S Drag	57 Chrysler 300C Black (6/01)
64½ Mustang (Ford precision 100 coll. Av)	13 Ford Model T Speedster (Ford 100 Coll 5/01)



Top: Sunnyside SS7722 32 Ford 3-window coupe

Middle: Corgi CC12403 Volvo FH 4 axle Ballasted Tractors, Nicholas Bogie & Fert Drier load

Bottom: Corgi US 51401 International Transtar & Girder Load

