

# MINIATURE AUTO

October/November  
2005

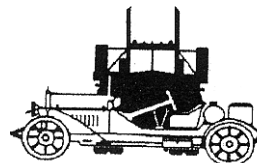
**Issue 218**

A publication for and by collectors and builders of model vehicles

*36th Year of publication*



*Team Calliber 1/43 vintage racer  
1940 Ford Coupe*



**Miniature Auto is the bi-monthly newsletter of  
The New Zealand Model Vehicle Club (Inc.)**

## CLUB DIRECTORY:

### NATIONAL EXECUTIVE

President: **Stan Beavon**, Tennyson Street, Rolleston  
Phone (03) 347 4355, fax (03) 347 4357

Vice President: **Shayne Spicer**, 171 Surrey Street, St. Clair, Dunedin  
Phone (03) 456 1186

Secretary: **Eric Brockie**, PO Box 1356, Dunedin  
Phone (03) 488 1048

Treasurer: **Robin Austin**, 57 Arnott Street, Alexandra, Central Otago  
Phone (03) 448 9276, e-mail austinrk@paradise.net.nz  
E-mail austinrk@paradise.net.nz

Editor: **Ron Ford**, 52 Hillside Drive, Upper Hutt.  
Phone/fax (04) 971 9808  
E-mail editor@nzmvc.in-newzealand.com

### REGIONAL DELEGATES

Wellington: **Ian Cousins**, PO Box 12-057, Thorndon, Wellington  
Phone (04) 934 5172

Marlborough: **Warren Piesse**, 19 Hutcheson Street, Blenheim  
Phone (03) 578 3683

Canterbury Otago: **Carville Stewart**, PO Box 42 Sefton  
**Shayne Spicer**, 171 Surrey Street, St. Clair, Dunedin  
Phone (03) 456 1186.

Southland: **Paul Thompson**, 16 Ferry Street, Wyndam, Southland  
Phone (03) 206 4613

Please address all correspondence to the **Secretary**  
Change of address to the **Secretary**  
**MA contributions to:**

The Editor,	or	Ian Cousins
52 Hillside Drive,		PO Box 12-057,
Upper Hutt 6007		Thorndon, Wellington
editor@nzmvc.in-newzealand.com		nzmvwgtn@nzmvc.in-newzealand.com

Club Website: [www.nzmvc.in-newzealand.com](http://www.nzmvc.in-newzealand.com)

*The views and opinions expressed in Miniature Auto are not necessarily those held by the New Zealand Model Vehicle Club (Inc.) and the Executive and no responsibility can be accepted by the Club and/or the Executive.*

**DEADLINE FOR MA 219 - 21<sup>ST</sup> NOVEMBER, 2005**

## FROM THE PRESIDENT

It doesn't seem long since the last AGM was held and now its time to think about the next one. Included with this issue of Miniature Auto is an information sheet about nominations for Club Officers.

I would like to extend a warm welcome to new members who have joined the Otago and Marlborough Branches over recent months.

The rising prices of petrol and diesel are finally affecting peoples' vehicle usage. The roads here in Christchurch and Canterbury are a lot quieter and if you have to go into the city; parking metered spaces are readily available. It's certainly quite noticeable. It's now cheaper to buy a model car than to fill your car's petrol tank!

With Branch AGMs upon us; let me encourage members to stand for branch office positions. Don't leave it to the same old few to run the branch; they might be pleased to have someone else do the job for them for a change.

Happy modelling,

**Stan**



## IN THIS ISSUE:

Directory	2	From the President	3
Around the Branches	4	Letters	4
Eric's Toys	6	Mercedes Racing Car Transporter	7
Model Scrutineer	8	Rotary Reduction	10
Display Ideas	12	Ronbling On	13
Micro Models Part 2	14	That's News	18
Tailpiece	20		

# AROUND THE BRANCHES

## SOUTHLAND:

G'day Petrol Heads, Paul here. This report is about the Big Car Show held at the Edgar Sports Centre, Dunedin. Wow, what a show! I walked in the door and guess what met me inside? There was a 2005 Bentley Coupe Hardtop in black. Also there was everything from a gas powered working chassis to a 'boxed' real Mini. I think Car of the Show was a GTS Dodge Viper in blue with white stripes. Nice!

Herbie the Volkswagen was there along with a nice '55 Chevy Nomad wagon. A replica of Mark Skaife's Holden SS VT was in a display and a neat thing I did see was a Mazda from the '60s which was the earliest Mazda in New Zealand and in original condition. It was in white and really nice. A dragster made an appearance as did a V8 powered Honda Accord. There was even a engine building competition, and yes, it started when complete.

The Swapmeet was good—some real treasures and cheap prices.

Everybody should save their pennies for next years' show, 'cause I think it's the best show I have seen so far. Well worth a look and don't forget the camera. Roll on 2006!

*Paul*

Results from the August Club night:

Kita:

- 1 **Fred Hawkes**, BMW and sidecar
- 2 **Owen Dickson**, Mini
- 3 3

Readybuilt, small:

1. **G.Robertson**, Eddie Stobart truck
2. **R.Larsen**, '41 Chev
3. **F.Hawkes**, '38 Ford

Readybuilt, large:

1. **R.Larsen**, VL Commodore
2. **F.Hawkes**, FJ Holden ambulance
3. **A.Graives**, Peter Brock Holden

September Club night results

Kits:

1. **Mrs. Graves** 3D Jigsaw  
4 wheel ATV
2. **Fred Hawkes**, X-Wing Fighter
3. **Paul Thompson**, Hamburglar train

Readybuilt, small:

- 1 **Alan Graves**, Ford GT40
- 2 **Paul Thompson**, Vauxhall Vectra
- 3 **Fred Hawkes**, Mini

Readybuilt, large:

1. **Paul Thompson**, 1912 Rolls Royce
2. **Fred Hawkes**, '69 Triumph  
Bonniville motorcycle.

*Extracted from the Southland newsletter*

## LETTERS:

Dear Ron,

In response to Warren Tyson in MA217, I'll ask some questions to help ascertain the problem. Have you cleaned the models in soapy water? Are you using the same soap? Is it tank water or town water? If town supply, has the town supply changed? As you can see by my questions, I think you may be adding something to the surface of the plastic when you clean.

In 35 years I have been building kits, I have only once cleaned the kit. It too had a reaction with the spray paint I used. I don't clean them anymore. You may have to scrape the points of gluing so that the glue has a clean surface to contact.

The glue?. I used to use Tamiya glue but I found after 10 years or so it just lets go. After a mad rush to get some glue to build a kit for the next meeting I bought some Humbrol glue, it seems to do the job, time will tell.

*Owen Dickson*

Southland Branch

*At this point, I would like to apologise to Warren Tyson for not publishing his letter (not connected with the above subject.) I am looking into the situation and I hope all will be resolved amicably. Ed.*

Dear Ron,

Sorry but you wanted to know!

For those who love Lamborghini or Ferrari you may not want to read this. In the effort to build a kit for an up coming meeting I decided to build a kit I had thought about a while ago, 'a best of both cars' Taking a previously built Ferrari F50 and a Lamborghini Koenig Contach LP500 I decided to build them into one. Taking the two models and pulling them apart was a brainwave and saved mega time on the build.

The cassis is as complete F50 as I could get under the Contach body. Cutting off as much as needed to make it fit. Cut a bit, try to fit. The F50 is a Tamiya kit and the body is a Fujimi kit with opening doors and not much engine detail.

The wheels are off a Mercedes DTM race car with the back wheel spokes clipped and glued into the back of the rims, to give the rim depth.

It's silver at the front and fades through eight shades of green to the back. One of my

earlier attempts at custom painting. The wheels are red in the centre with silver rims.

Just in case you're wondering where the Lambo parts went to I have included a photo of part of it to tease you until the next MA.

*Owen Dickson*

Southland branch

Dear Ron,

With regard to Maurice's tip on scratched window 'glass'. One of the solutions for light scratches (and generally adding extra shine to clear plastic parts) is to dip it in Johnsons Klear floor polish (called Future in the US where I got the tip from).

With regard the comments on price in your Editorial (MA217). Yes prices have gone up but what is the relationship between price/income today versus 1965 (or when-ever)? Also the obvious improvements in quality and level of detail on a Vanguard compared to a 60's vintage Dinky (or even an early Vanguard) surely make up for that. Even if some collectors think this involves a loss of Character in the models

I know what you mean about the invisibility of models these days too as the only advertising I see in this country seems to be in NZ Classic Car. For any other info I have to use those plentiful chat rooms or bulletin boards on the web for new releases. these are even better than many of the manufacturer web sites which are often not updated on a regular basis. Incidentally my favourite bulletin board is: <http://pub15.ezboard.com/bautobarnmotorsports>

*Lee Tracey*

## ERIC'S TOYS

I have three pressed steel toys in my collection that look similar to **Tri-Ang Toys** and they may well be, but the finish and construction from the other **Tri-Ang Toys** I have.

There is a Tow Truck which is 10½" (27cm) long with the word '**Storkline**' engraved on the back landing of the tow truck. A separate metal grille is fixed to the front of the truck. The back deck is also fitted to the main body and the crane is fixed to the deck.

Two-piece metal wheels are fixed to the body with axles that are flattened at the ends to stop them falling off. The front ones being inside the mudguards and the back ones are on the outside the body.

The body of the toy is painted red with a green deck and red crane.

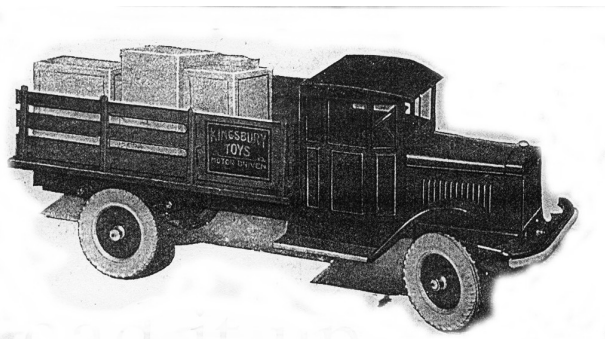
The second toy is of a truck with a deck and sides. The sides have signs that read 'Metal & Ashes' and 'Sand & Gravel'. It is 15¼" (39cm) long. The body is painted red with a yellow back.

The third toy is a digger 15" (37cm) long in red, blue and yellow colours. Can any Member throw any light on these toys? They may not all be the same made, and who is **Storkline**?

### KINGSBURY MOTOR DRIVEN TOYS

While I don't have any examples in my collection, I do have an old original advertisement from 1926. It is titled; 'Kingsbury Motor Driven Toys.—Load it up and start away.'

Some of the wording in the advert. makes interesting reading: "The Kingsby Motor Truck No.318 is 25 inches long. Handsomely finished in enamel, rubber tires, cushioned bumper. Spring motor wound crank fashioned from the front. Price \$15. west of the Mississippi \$16.50."



"Have a trucking business all of your own! Load up to capacity at your 'warehouse.' Crank your motor—which winds a powerful spring. All set! Put the motor into gear with the lever beside the driver's seat. And away you go. Around the corner a package to be delivered. Pull back the lever at the driver's seat—brakes on—the truck has stopped. Deliver your package, and you're off to the next stop. Don't stop to crank yet - your truck will run 200 feet before this is again necessary."

A toy that will make you the envy of every boy on the street. The finest toy we have ever built - and Kingsbury has built fine toys for over 35 years." (that means it started in 1891!).

"Better put this truck on your "Christmas Stocking List" right NOW."

"This wonderful life-like motor truck is just one of an almost endless series of mechanical and pull toys made in Keene, New Hampshire by Kingsbury. If your dealer is not now showing the Kingsbury Toys for Christmas, send for a Catalog that shows and describes Fire Engines, Ladder Trucks, Hose Wagons, Busses (sic), Delivery Wagons, Tractors, Trolley Cars - every kind of wheeled toy, priced within everybody's means - toys from \$1 up."

What would you have to pay now to buy one?

*Eric Brockie*

*Thanks Eric. By the age of the advert. it will be well out of Copyright (see Tailpiece), so can be used without getting permission. RLF*

## CONRAD MERCEDES RACING CAR TRANSPORTER

I recently purchased this model from the UK. The first thing that struck me was how out-of-scale the racing car on the back appeared. I discovered it was a Brumm 1/43<sup>rd</sup> scale Mercedes Benz Silver Arrow.

Still uncertain about the relative scales and thinking that the truck must be about 1/50<sup>th</sup> scale. I sent Conrad an email questioning the scale and date of issue for the transporter. Within hours I had a reply from Conrad advising "You can find item No. 1034 on page 159 of our catalogue II. It is a Racing Transporter 1955 w/out car, Scale: 1:43 Length: 160mm. The model must have been built before 1992".

I then did some research via Google and found some information on the Daimler Chrysler web site. The history of this fascinating vehicle can be found on this site. *Note: Ian did supply this history but as I am not sure of the Copyright; it is better not being included. I apologise to Ian and Members for this action. RLF*

### Specifications:

**Engine:** Water-cooled six-cylinder in-line unit with direct injection, bore x stroke: 85 x 88 mm, displacement: 2998 cm<sup>3</sup>, output: 192 hp at 5500 revs/min, max. torque: 25.8 mkg at 4700 revs/min, compression ratio: 8.3:1, electric system: 12 volt, fuel consumption: 25 liters/100 km.

**Power transmission:** Rear-wheel drive, Daimler-Benz single-plate dry clutch, fully synchronised four-speed transmission with involute profiles; transmission ratios: 1st gear: 3.44, 2nd gear: 2.29, 3rd gear: 1.53, 4th gear: 1.0, reverse: 4.67; rear axle with hypoid gearing.

**Running gear:** 300 S frame extended at the front and rear; front axle with wishbones and coil springs, rear swing axle with lowered, separate pivot points for the two axle carriers, torsion bar stabiliser, four drum brakes with brake booster, engine brake, propeller shaft disc brake; 5.5 K x 15 wheels with 7.60 x 15 tires. Fuel tank with a capacity of 150 litres.

**Dimensions/weights:** 3050 mm wheelbase; 6750 mm long, 2000 mm wide, 1750 mm high; track width of 1480 mm at the front and 1525 mm in the rear; dry weight: 1865 kg, gross weight in ready-to-drive condition: 2100 kg.

**Performance:** Top speed of approx. 170 km/h.

### The Model:



The model comes packaged in a typical Conrad box without window display.

What originally threw me was the size of the transporter compared with the car, but as I stated above, the heritage of the transporter is largely due to the MB 300S series cars. It is actually quite a "small" transporter, by racing standards, as it is basically designed to carry only one car and no spare parts, tyres or other equipment.

The model reproduces the unique styling of the original transporter and looks quite "futuristic". My model came with a Mercedes-Benz single-seater as its load although I know that Conrad produced a model #1034 of the transporter alone, as well as the #103401 (transporter and single seater "Silver Arrow") and #103402 (transporter and 300SLR).

The transporter is in a deep blue colour with chrome accessories. The load tray is silver and comes with twin ramps. There is little detail on the underside of the model apart from a small chromed exhaust pipe. The race car appears to be a standard issue Brumm Silver Arrow.

*Ian Cousin*

# MODEL SCRUTINEER

One of the more interesting sidelights of being a car lover is the way that we associate certain colour schemes with certain cars. For example if someone were to say Bugatti Type 35 to you the mental picture that springs to mind is of a blue one, or 59 Cadillac would conjure a vision of a bright pink convertible for most. Mention VB Commodore to me and the mental vision is of a light metallic green. Given this mental image the announcement by Trax that one of the first two releases of the VB was to be



Sage Green Metallic with a Green interior I had to have one.

On arrival the model turned out to be one of the most, no THE most impressive Trax I have seen yet. The advent of Bianta and Classic Carlectables have forced Trax to lift their game over recent years and it shows in what is to my mind the best release yet from them.

The body shape is well captured in a very crisp moulding with panel lines that are spot on. Paint is flawlessly applied all over though to my mind perhaps a shade too dark (or maybe I have just seen too many faded examples on the roads over the years). Window surrounds are nicely picked out in silver and black (the separators in the rear side glass, which are painted onto raised parts of the clear 'glass'). All lights are separate



plastic inserts. Wipers are separate black items that rest nicely against the bottom of the windscreen. There are two external mirrors with reflective faces. Door handles are separate items picked out in chrome. Bumpers and body mouldings are picked out in chrome with a central black strip which is the area of biggest (relatively speaking) let-down on the model as the black seems to run over the chrome on both side mouldings on my example. All Holden and Commodore badging has been Tampoed very crisply onto the body, though with the size and silver on green combination it can be hard to spot.

One of the areas where Trax have really upped the ante with this model is the front

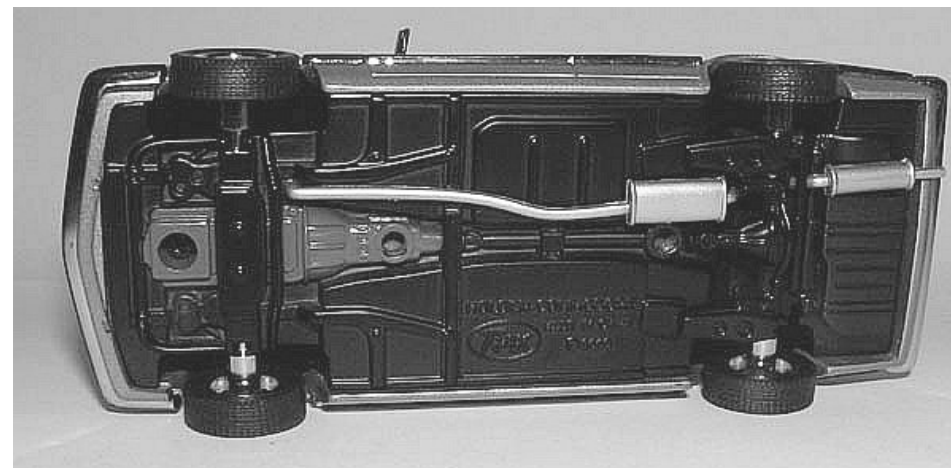


grille which is a superb rendition of a



tricky shape to get right at this scale. It is completed with a black wash to ensure you can see how good it is. Another area worthy of praise are the wheels and tyres, which while seeming a tad on the narrow side look really good when viewing the model from the side, where the detail really shows up as does the way they fill out the wheel arches.

Bottoms Up is also revealing of an area of considerable improvement for Trax. The floorpan contains plenty of moulded in detail. However it also contains separate rear suspension and exhaust pieces. The bottom of the engine and gearbox are well picked out in red paint.



The interior is difficult to see a lot of detail in partly due to the green colouration of just about everything and partly due to the design of the car. Any dash detail is well nigh invisible due to the design of steering wheel and the partly open window which I find as much of a hindrance as a help. One strange area is the centre console. Behind the Auto shift lever is a large triangular shape sticking up from the console.

I suspect this is possibly meant to be the handbrake, I'm not enough of a fan of Holdens to know in detail, unfortunately if so it is missing the end of the lever that would stick out from the boot. It is also stuck very firmly on.

All up a really nice model of a seminal Holden product that should grace the collection of any Holden or Aussie car fan. At the price point it is certainly not out of place amongst the much higher priced offerings from its competitors. However if you want one you either need to be very quick to the Trax website or start hunting through secondary market sources as they were selling very fast.

*Lee Tracey*

# ROTARY REDUCTION

Following on from the RX 4, Mazda's next effort to crack the all important US market was a sporty 'compact' coupe to challenge cars such as the Ford Thunderbird. Based the RX4 floor pan with an upgraded IRS the RX 5 was a flop internationally, only being imported to its primary target market from 1976 -78. It was, however, a sales success in Japan where it continued in production (under the name Cosmo AP) until 1981.



Notwithstanding the RX 5's moderate sales success it has been modelled in both kit and diecast forms by a surprising number of companies, most contemporary to the real car. Despite this some, such as the Entex and Doyusha Nostalgic Heroes kits and the



various Tomica cars, are fairly readily available from sources such as eBay.

Most of the kitset offerings are in 1/20 scale, which leads one to suspect many may be from the same moulds. Certainly the offerings from Entex (90471) and Nagano (?) come from the Bandai (8130) moulds. Also



in this scale are examples from Nakamura (?) and a hot rod version from ARII (AR125-B). My listing also contains a version from Doyusha (NH 12-1200)



that is stated to be 1/20, however as it is a part of the Nostalgic Heroes range I suspect that it is actually 1/24. Definitely in 1/24 is the Doyusha street racer version (KM600-6), though why anyone would want to turn the RX 5 into a street racer is beyond me. The only other kit in 1/24 I know of is Otaki OT-3-38-400.

Odd scale kits were made by Nichimo (MH2808) and ARII (AR203-B) in 1:28. ARII AR102-2, aside from being the only 1:32 kit is also the only kit of the Landau

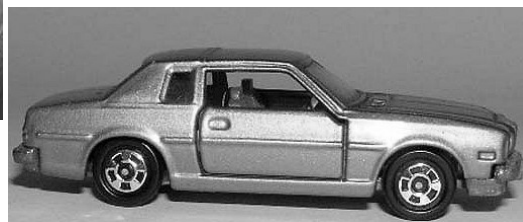
version of the RX 5.

At this point in time; all diecast versions of the RX 5 are toys to some extent. The least toylike of which would be the Diapet 1:40 scale offerings comprising G-52 (Limited), G-94 (Sport) and G-136 (late version with



rectangular headlights). Also released was a 1:28 version (G-87).

The only competitor to Diapet for quality are the Dandy releases in 1:47 scale. There are two versions both numbered 059 comprising a street car and a Fuji Raceway Pace Car.



Dandy were of course the large scale range from Tomy Corporation who released several versions of the RX 5 in their toy range, Tomica. No. 38-3 (third casting of No 38) was a Landau version available in green or metallic brown. No 45-2 was a police version, while the street version was the second casting to carry No 55 and was only available in red with a white interior. The last release was again the Fuji Pace Car which was catalogued as No 74(-2).



Pure toy versions were made by Summer, a 1/40-ish toy available in two versions, one a light green with #4 carries catalogue numbers 702 and 680. Cat. No. 706 is the same casting in black with red & silver #111. Playart's version is a 1:65 toy available in several colours.



One last interesting version I have heard of is a 1:10 scale Tin toy with a flywheel motor which was released as No 159 by K.N. in yellow.

*Lee Tracey*





# IDEAS ON DISPLAYING MODELS

A better title might be 'Not Displaying Models'. I know I'm not the only one who finds it much harder to know where to put models once they are bought; than to actually acquire them. My last couple of buys sit in their boxes in front of me as I write this, only opened once in the two months I've owned them. There is nowhere to put them. The others sit in their boxes under beds and above wardrobes. My only large display cabinet has a black cloth draped around it all day, which does a great job of stopping the sunlight, but it's hard to see through black cloth. Buying readybuilts is fun in that you need only time, patience and money; the rest is done for you - they arrive and it's on to the next one. With kits the arrival is only the beginning and everything lies in front of you.

I'm forced into thinking about how best to display the ones I have. It's not easy. I'm allergic to mental challenges. Living outside the main centres is a disadvantage and the manufacturers I've tried to deal with really aren't interested in dealing with individuals.

Two main features of display which interest me are space and motion. With space, a personal opinion is that a small number of models spaced widely apart are much more effective than a greater number pushed together. Each model is enhanced in a sense that you focus your attention on one at a time. How to actually achieve this in practice leads to real problems. I live in a small home and there just isn't room. A part-answer for me may be to use the main display cabinets for storage rather than display and cram the models in. Then have somewhere in the lounge where two or three cars can be shown and changed every week or so.

When it comes to 'motion', one remark made by others outside modelling circles is that static models don't actually 'do anything'. This is personal preference and in turn, I can say that remote controlled vehicles and slot cars (etc.) do nothing for me. They do have a point, however, as people like to see something move in a display. At model shows, they will gaze at a TV monitor showing a vehicle in 2-dimensional

black and white when a static model of the same thing is in front of them in 3-dimensional colour. I wonder if in part this movement factor is why model railways get so much of the public's attention.

To try and get over this problem myself, I have spent hours combing department stores and jewellers as they are the most likely place to find battery-powered or motorised revolving display stands. Through *Graeme Robertson*, I now have one of these, which has the advantage of partly solving the space problem as it is multi-tiered. The real surprise to me has been the reaction of friends not otherwise interested in model cars. Without trying to 'push my own barrow' here, many of them were intrigued by the little 1:43s illuminated and slowly going round. They seem to be prepared to look at them, off and on, for hours. I have actually asked some exactly what they think it was that attracted them, but no-one could tell me. It was definitely related to movement. The display stand itself is a little unusual in a home, but that alone isn't enough. As an experiment, I left the stand empty and turned off for weeks after cleaning it, and no-one took a blind bit of notice of it. It makes sense that motion attracts attention as these stands were used for marketing. Also, because of the revolving feature, a much greater number of articles can be displayed within a confined area.

The stand I have is called a Counter Display in that it has to be placed fairly high to be at viewing level. The same manufacturer makes a large floor mounted unit. I fancy one of these as it would hold more models and be powerful enough to support and drive 1:18s, but again you need a large room to avoid it looking too big and out of place.

*John Macgregor*

*Reprinted by kind permission of the Southland Branch Newsletter. RLF*

# RONBLING ON

Obviously, I can't be an expert on everything - perhaps nothing! Anyhow, when I set up the front page, I described the Team Calliber 1940 Ford Coupe as a vintage NASCAR racer (and in the That's News section), but I just read in another publication that NACAR did not start until 1948, so what was the sport called pre-war?

It is interesting where this model came from. I saw the range reviewed in the UK model magazine MAR, and wondered where I could get a couple. (As an aside, how annoying is it, when you see a write-up on an interesting model and there is no help as to where to buy them.) Only a couple of weeks later, I saw one on Trade Me ([www.trademe.co.nz](http://www.trademe.co.nz)) and I was able to 'win' it. The vendor has his own Web site [www.diecastmodels.co.nz](http://www.diecastmodels.co.nz) (Nelson based), so if you are into NASCAR racers, there is plenty of variety available.

Having mentioned 'The Web', it is amazing how things have changed since it's introduction. Well it has been around for years but only recently it has made an impact on our lives. Of course you can live perfectly well without it. It is still amazing how you can sit at home and run up a massive credit card bill!

Over the years, even pre-Web, I have bought by mail order and fortunately, only a few parcels have not made it to my home. Just recently I installed a big mail box (country style) at the end of our drive (away from the street end) because I found that parcels were being left in lots of places around the property. Luckily, this seems to have focused the deliverers.

How do you buy your models?

I was browsing in The Warehouse the other day and spotted some bright new models both in 1/24 scale and 1/18. Bright was the right word, or should I say Bling! Not my cup of tea (as it were), but such items will attract the younger persons which is not a bad thing.

Another 'find' at TWH is a New Ray 'kit' in about 1/32 scale. It assembled into a Honda Integra Type R with either a full interior with free running wheels or an electronic package with motor and steering, etc. I chose to have the electronic version. It comes with a wrist watch that controlled the IR functions. The car can be driven forward, reverse and steer left and right. Nothing so unusual there, but it also has sound effects - starter and motor running (sounds like a diesel at idle), lights, horn, brakes (squeal) and even an alarm setting sound when you turn it off. Great fun! There is a bit of motion for a display! The other unusual feature of the kit is the body is in metal, whereas most other like toys are plastic.

What else is around the shops? It seems diecast aircraft have really taken off (oops, sorry about that), with many makes entering the market. Yes, I have added a few to my collection, including one of the Corgi Aviation Archive Lockheed Hercules of Operation Deep Freeze - a familiar aircraft in New Zealand, especially around Christchurch. It has personal nostalgia for me as I was flown in one to the Antarctic 40 years ago.....

Oh it's a funny old game....

Keep on Modelling,

*Ron Ford*

# MICRO MODELS FOR THE FOURTH & FINAL TIME?

## PART 2 *Continued from MZ217*

This is the second part of a new Micro Models 'saga'. The releases are being dealt with in catalogue number sequence which isn't necessarily the order they came out in. Items such as the Bedford SB bus had several false starts and acquired a few different catalogue numbers on the way. These have been ignored even though they were published in Micro Models Limited price lists. The actual catalogue number is the only one applicable.

**MM004**, Holden FJ Special "New Zealand Police"  
Missed last time: the limited edition prefix for this model was **PAxxx**

**MM005**, Holden FJ panel van 'Australian Royal Mail'.  
This is the standard issue of the Holden FJ van ~ a model we will see a lot of in the range. Unlike MM003, the base has the normal spun over rivets to hold it on. These have been touched up in black.  
Goodwood (Melbourne, Australia) originally issued a 'Royal Mail' FJ van but their tampo\* printing was much simpler than this newer issue. On the panel 'Royal Mail' is printer in smaller letters with the Crown and EIIR cipher in between the words.



The door carries the Australian Post logo whereas the original just had 'PMG' in a circle logo (for Post Master General). Red body. The lettering is gold coloured on the red body. LE code is **SAxxx**

**MM006**, Holden FX Taxi 'Yellow Cabs'



This is the first appearance of the Holden 'FX' Sedan. It is painted a 'yoke' yellow with a 'TAXI' sign fitted to the roof. 'Yellow Cab Co. Phone C4721' is tampered on the front doors. I assume it represents the Sydney Yellow Cab Co.? LE code **TYxxx**

**MM007** ~ Not issued

**MM008**, Holden FJ panel van 'NZ Traffic' Police.  
Our old friend the FJ van appears again. I doubt if the model is authentic, but it is quite acceptable. It is painted black with a white roof sign with 'Traffic' tampered on it. As far as I know, the roof signs were not blank, so I suppose MM Ltd. simply filed off the letters. Having said that, some of the original early release Holden FX Police cars, had blank roof signs with tampered wording, so the blank casting may have existed.



The New Zealand Traffic Department crest is tampered on the door, somewhat oversized, but authentic. The tailgate has the word 'Traffic' in black in a white rectangle. LE code is **PBxxx**.

**MM009**, International delivery van 'Peter's Ice Cream'.



This is another 'reissue' and not easily confused with the original Goodwood product. The signs are sized and placed differently and the colour (pale cream) is lighter than the original. Otherwise it is the standard International van issue. The LE code is **DPxxx**

**MM010** ~ Not issued

**MM011**, Ford Mainline utility 'D.O.C.A.'  
First appearance of the Ford Mainline painted mid cream. 'D.O.C.A' is the Australian Department Of Civil Aviation. This is a standard casting and the LE code is **VAxxx**.



**MM012**, Holden FX Sedan, 'Victoria Police'



Once again, this is the first issue of the Holden FX Sedan. This one is a bit different also as it has additional tailor-made accessories added: not seen before in the original issues. There is, along with the 'standard' roof mounted 'Police' sign, a small aerial fitted in front of the windscreen (same style as the normal rear mounted unit – coil base and a turned over top.) and a siren (white plastic) on the front right mudguard. The door sign is oversized as usual. The paint is white and the LE code is **PVxxx**

**MM013**, Ford Zephyr Six mk.1 'NZPO Engineers'

First outing for the Zephyr, which, to be honest, isn't a very good model. Anyhow, the 'NZPO Engineers' may seem a strange choice, but apparently Kevin Meates Snr.,



so it represents a bit of personal nostalgia. The Zephyr is painted a typical (for the time) 'battleship grey' used by the Government for most of the fleet.



The LE code for the Zephyr is **VBxxx**.

**MM402**, Holden FJ Special 'NSW Fire Control'  
Note the change in catalogue numbering. The first number represents the year of production. There was no MM401 although it



was supposed to be the same as MM001.

This is a standard casting for the FJ complete with aerial mount on the back bumper. The aerial is the same pattern as the originals but is made of finer wire and seems to be nickel plated. The doors are painted white with the rest of the body in red. Tam-po printed signs are extensive and all the chromed parts are picked out in silver. The LE code is **EWxxx**.

**MM403**, Holden FE coupe utility 'NSW Public Works'.  
The original Holden FE issue was very rare with it being only released in small number by Goodwood. It did appear in the Matai and Torro ranges, but Lincoln did not get around to issuing it.  
The model is painted yellow with red signs on the doors.  
LE code is **VDxxx**.



**MM404**, Holden FJ van "NZPO Royal Mail"  
Once again, repeating the original Micro Models release; this time a Lincoln Toys product. Also the signs are different from the original with the actual Royal EIR Mail being the same as MM005, but with the NZPO emblem on the door.  
There was a later promotional model issued for the NZPO which had different door sign (MP502).  
LE code **SBxxx**



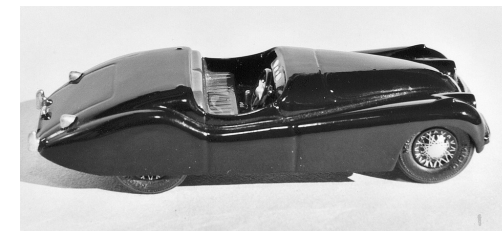
**MM405**, Holden FX Sedan "Tasmanian Police"  
Another outing for the FX casting. This has additional 'non-standard' fittings with a mudguard mounted siren (different from MM012 as it looks like a horn off of an old wind-up gramophone!) and a small roof mounted aerial. The colour is white with black printed logo on the front doors.  
LE Code is **PTxxx**



**MM406**, Volkswagen Bus  
This was one of the best of the original castings and still stands up well against modern attempts. This is light blue with blue wheels with silver hubcaps.  
LE code **JAxxx**



**MM407**, Jaguar XK120 convertible.  
Being that this was one of the first of the original Micro Models, it is not a very good casting. Most jarring is the lack of a wind-screen, even though the mould had it cut into it, but the sprue had been closed off.



The Jaguar is well finished in British Racing Green with a brown seat. The steering wheel and dashboard are detailed with paint. I am not sure whether the spoke effect wheels are convincing—maybe at a distance? Micro Models Limited chose to bend the baseplate at the front to alleviate the mismatch (gap) of the original  
LE code is **IAxxx**

**MM408**, Ford Mainline Utility, "Micro Models".  
A standard casting painted the Micro Models maroon. The Micro Models logo on the side of the International Delivery Van.  
LE code **MMxxx**



Asa can be seen, Micro Models Limited are making the most of all the castings they have available

*To be continued in MA 219*

# THAT'S NEWS? - THAT'S NEWS!

**MAISTO** 1/43 readymade diecasts from China. Free Wheelers in the style of the 1/43 BBurago.

Lamborghini Gallardo  
Subaru Impreza WRX STI  
BMW X5  
Mercedes-Benz A Class 2004  
Mercedes-Benz SL Class  
Volkswagen Touareg  
Dodge Viper SR10 2004  
Audi TT Roadster  
Citroen Xsara Picasso  
BMW Mini Cooper  
Volkswagen Microbus T1  
Volkswagen New Beetle convertible

**MOTOR MAX** (Red Box) 1/43 readymade from China.

Ford F-150 Super Crew Cab pick-up 2002  
Plymouth pick-up 1941  
Jeep Liberty 2003  
Ford 3-window coupe 1932  
Pagani Zonda C12 Supercar  
Mercury coupe 1949  
Chrysler Crossfire 2003  
Saleen SR

**GORDON** 1/43 readymade from Hong Kong.

Light Delivery Truck  
Light Bus

*These are actually good models of the Toyota Hi Ace but nowhere on the packaging or model is the name to be seen. Even the emblem on the grille is a blank.*

**REVELL** 1/18 readymade from China for Europe

Wiesmann Roadster 2004  
A new car styled after the Jaguar XK140

**RC2** 1/10 scale readymade from China for the U.S.A

Harley Davidson 2004 Fat Boy  
Harley Davidson 2004 V-Rod  
Harley Davidson 2003 Dyna Super Glide

**J COLLECTION** 1/43 readymade from China for Japan.

Daihatsu Copen convertible  
Nissan Z Nismo S-Tune  
Nissan Cabstar light truck  
Nissan Navara rally  
Toyota RAV-4 Dubai Police.

**EBBRO** 1/43 readymade from China for Japan.

Datsun (Nissan) Bluebird 410  
Hino Contessa 1300 Coupe 1964  
Honda Beat 1991  
Toyota -7 1969 Japan GP

**IXO** 1/43 readymade from China

Lagonda Rapide Le Mans 1935  
Mercedes-Benz 200D  
Ferrari F40 Le Mans 1995  
Citroen BX 4TC Rally Monte Carlo 1986  
Jaguar XK120C Le Mans 1951  
Maserati MC12  
Ferrari 612 Scaglietti 2004  
Alfa Romeo SC 1931  
Ferrari 250P Le Mans 1963  
Lotus Elite Le Mans 1960

**TEAM CALLIBER** 1/43 from China for U.S.A Early Stock Racers

1935 Ford V8 Coupe  
1940 Ford (see front cover)  
1952 Hudson Hornet  
1956 Chrysler 300B

*Interestingly, these cars are virtually showroom stock with all the road going chrome trims, etc.*

## THAT'S NEWS, CONTINUED

**ITALERI** Plastic kits

1/24 Volvo VN670 tractor unit  
1/35 Demag Sd. Kfz10  
1/6 Honda RC211V Team Moviestar 04  
1/72 Soviet Armoured Command Car  
1/72 Soviet APC BTR-152K & V  
1/72 Soviet Fuel Truck Zil 157  
1/72 Soviet Army Truck Ural  
1/72 Soviet Command Vehicle Ural  
1/72 Soviet Fuel Bowser ATZ543  
1/72 Soviet Army Truck Zil 131  
1/72 Soviet Command Vehicle Zil  
1/72 Soviet Fuel Bowser AT24  
1/72 MTPL Rocket Launcher  
1/72 Morris Quad Tractor  
1/72 SD Kfz 162 Jagdenpanzer

**HELLER** Plastic kits

1/72 Opel Blitz & Pak 40  
1/43 Peugeot 307 WRC 2004  
1/24 Ford Mustang  
1/24 Peugeot 307 WRC 2004  
1/18 Renault F1 2004  
1/24 Yamaha YRZ-M1 2004  
1/12 Yamaha YRZ-M1 2004

**REVELL EUROPE** Plastic Kits

1/72 Sd Kfz 250 Half Track  
1/24 Porsche 944 Turbo  
1/24 Ford Escort Mk.II  
1/25 Peterbilt Alaskan Hauler  
1/9 Norton Manx 500cc Heritage

**AMT** Plastic kits

1/25 Piranha  
1/25 1935 Chevy modified  
1/25 1965 Ford Galaxy XL  
1/25 1932 Ford 5-window Coupe  
1/25 1953 Ford pick-up Street Machine  
1/25 Chevy Impala  
1/25 1969 Ford Mustang 2 in 1  
1/25 Chevette Flip Nose

## CALDECOTT MINIATURES

*Ready made diecasts from china for Australia.*

1/43 Ford Falcon XY ute 500  
*This is an improved version of their original release. It is also about half the price of the original @ \$A14.85*  
1/72 Ford Falcon GT HO  
1/72 Ford Falcon XC Coupe  
*New range of 1/72 @ \$A3.95 each*

**MINICHAMPS** Readymade diecasts from China for Germany

1/18 BMW M3 German Touring Car 1988  
1/18 Audi V8 Quattro GTC 1992  
1/18 Porsche 908 1000km Nurburgring 66  
1/18 Aston Martin DBS Coupe 2004  
1/18 Jordon Ford EJ14 F1 2004  
1/43 Honda 006 Japan 2004  
1/43 Opel Vectra GTS V8 2004  
1/43 Volkswagen Karmann-Ghia 50th ann  
1/43 Volkswagen Touran 2003  
1/43 Toyota F1 Showcar 2005  
1/43 Audi R8 Le Mans 2004  
1/43 BAR-Honda 006 F1 04 San Marino  
1/43 Dallara Spies F3 Euroseries 20043  
1/43 Jordon Ford EJ14 2004  
1/43 Porsche 911 GT#-RS Daytona 2004  
1/43 Porsche 911 Carrera S Coupe 2004  
1/43 McLaren Mercedes MP4-19B 2004  
1/18 Red Bull Cosworth RB1  
1/12 Triumph Rocket III  
1/43 Opel Astra GTC 2005  
1/43 Volkswagen T5 Multivan 2003  
1/43 Toyota Prius 2004  
1/43 Toyota Corolla Verson 2004  
1/43 Volkswagen T2 ambulance DRK  
1/43 Ford Transit microbus 1972 Polizei  
1/43 Melkus RS 1000 1971  
1/43 Bussing LU 11/16 truck  
1/43 Ford Focus 4-door 2004

**Wanted: More kit news.....**



## TAILPIECE

Thanks to all those who contributed to this issue of *MA*. It is great to have a few new 'names' as well.

There was some pretty heavy editing of Ian's piece on the Conrad Mercedes Racing Car Transporter, mainly because of the possible Copyright infringement. Be aware that most published material (whether it is on paper or on the Internet) is subject to Copyright. Even if Copyright is waived, permission should be sought from the author or agent. Full acknowledgement must also be included. Note the caption on the front of *MA 217*.

Having got that grumble out of the way, a few other comments on Ian's article. The Conrad Transporter was originally made as

a commission from an English shop and the first batch was the wrong colour (blue was too light). I suspect that the problem with the sizes is due to the Brumm models being over-scale as are many of their so called 1/43 models. The Transporter has also been made in 1/18 and 1/43 scales by another company (can't find the reference).

Thanks Eric for your piece. It goes to show that in the Club, interests are very varied for it's not only whether you are into kits or readymades, but also toys, radio controlled, slot and so on.

Yet another plea for contributions, particularly from kit builders—and photos, please.

Below is an old Ministry of Transport advert., featuring Micro Models. The advise is true today, of course. (Thanks Eric).

Cheers, *Ron*

