

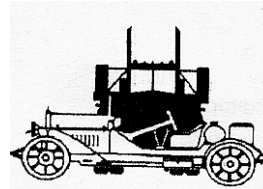
# MINIATURE AUTO

Issue 237

New Zealand



Diorama from the Model Car Festival



Miniature Auto is the bi-monthly newsletter of  
The New Zealand Model Vehicle Club (Inc.)

## CLUB DIRECTORY

### NATIONAL EXECUTIVE

President: **Howard Brockie**, 44 Salmond Street, Halfway Bush, DUNEDIN  
Phone (03) 476 6353

Vice President: **Roger Larsen**, 75 Dart Street, INVERCARGILL  
Phone (03) 217 7028

Secretary: **Eric Brockie**, PO Box 1356, Dunedin 9054  
Phone (03) 488 1048

Treasurer: **Graeme Robertson**, 37 Vyner Road, Otatara, RD 9, INVERCARGILL  
Phone (03) 213 1354

Editor: **Ron Ford**, 52 Hillside Drive, Upper Hutt 5018  
Phone/fax (04) 971 9808  
e-mail editor@nzmvc.in-newzealand.com

### REGIONAL DELEGATES

Wellington: **Ian Cousins**, PO Box 12-057, Thorndon, WELLINGTON 6144  
Phone (04) 934 5172

Marlborough: **Tim Babb** (acting), 4 Cashmere Grove, BLENHEIM 7102  
Phone (03) 578 2634

Canterbury  
Otago: **Carville Stewart**, PO Box 42 SEFTON 7445, North Canterbury  
**Graham Patterson**, 103 Musselburgh Rise, Musselburgh, DUNEDIN  
Phone (03) 455 0600

Southland: **Roger Larsen**, 75 Dart Street, INVERCARGILL  
Phone (03) 217 7028

Please address all correspondence to the **Secretary**  
Change of address to the **Secretary**

### MA contributions to:

The Editor, **OR** Ian Cousins  
52 Hillside Drive, PO Box 12-057,  
Upper Hutt 5018, Thorndon, Wellington 6144  
editor@nzmvc.in-newzealand.com nzmvcwgtn@nzmvc.in-newzealand.com

Club Website: [www.nzmvc.in-newzealand.com](http://www.nzmvc.in-newzealand.com)

*The views and opinions expressed in Miniature Auto are not necessarily those held by the New Zealand Model Vehicle Club (Inc.) and the Executive and no responsibility can be accepted by the Club and/or the Executive.*

## ACCEPTING CONTRIBUTIONS TO MA NOW!!

## FROM THE PRESIDENT

Well lesson number 1 has been learnt regards digital photography. You may remember that in the last issue I promised to send the editor lots of photos now that I had joined the digital age. Started with the best of intentions and took lots of photos at the Otago Branch Model Expo 2009. To ensure they would be of good quality I took them on a high mega pixel setting. Worked well until I went to email them to the editor only to find I had files far too large. Never mind lesson learnt and thanks to Shayne Spicer who came to the rescue and has sent photos and article in my place.

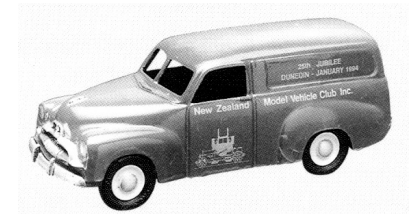
Once again a great display and only positive comments from the public. This display certainly takes a lot of effort but is a great shop window for our hobby and major fund raiser for the Otago Branch. Special mention must go to Eric Brockie and Graeme Patterson who spent many hours manning the display but to all who helped with either models or manpower a big thank you.

On a less positive note was the disappointing response to the survey sent out with the last issue of Miniature Auto re the clubs future direction. Only 25 replies received which means only a third of our members have had a say. Does this mean that the other two thirds are happy with the way we are currently progressing or is it just apathy? Sadly I think the later but as you can read elsewhere the results show that there will be no change.

Well off to Aussie in 3 weeks to visit friends and attend the Bathurst 1000 and hopefully in between view a few model shops. Travelling with others who aren't into our hobby but hopefully we can do a little arm twisting or there are some shopping centres close by for the girls. Report for the next issue.

Cheers

*Howard*



### IN THIS ISSUE:

From the President	3
Letter #1	5
Model Car Festival photos	8
Letter #2	11
Dinky Toy Evaluator	13
Farewell Chris Purcell	15

AGM Wrap-Up	4
Branch News	5
From the Secretary	10
Emek model trucks	12
What Do You Collect?	14
What is it?	16

## A.G.M WRAP-UP

It was a good turnout of members for the meeting and the venue was excellent with good sized halls and facilities, so thanks to the Southland Branch.

The changes to the Constitution where all the dates in relation to the Annual General Meeting now being held in May have all been registered with the Registrar of Incorporated Societies, so are now applicable to the Club.

Subscription payments for the next 15 months will be done in two stages starting with a 3 month period and a payment of \$7.00. This payment will make the member financial from the 1<sup>st</sup> September 2009 to the 30<sup>th</sup> November 2009. A second payment of \$25.00 will bring members financial from the 1<sup>st</sup> December 2009 to the 30<sup>th</sup> November 2010. The foregoing is in line with the changes to the Constitution which makes the Club financial year run from the 1<sup>st</sup> day of December to the 30<sup>th</sup> day of November. There has not been an increase in the subscription fee that members pay. Some members may elect to pay the full \$32.00 at the due date for the \$7.00 payment

**MEMBERSHIP.** It was good to see that we only had two members that had not renewed for the current year and I am sure that the credit for some of this must go to the Branches, who strive to keep their membership numbers up and so promote the survival of that Branch.

**TRAVEL GRANTS.** No travel grants were made with the exception of one \$50.00 payment to Ian Cousins to help offset the costs of travelling from Wellington. Ian attends most AGMs but also has the greatest costs, so members thought a small payment may have helped Ian.

### OFFICE BEARERS 2009-2010.

PRESIDENT	Howard Brockie
VICE PRESIDENT	Roger Larson
SECRETARY	Eric Brockie
TREASURER	Graeme Robertson
EDITOR	Ron Ford

### DIORAMA SIZES for COMPETITIONS.

Future competitions for the diorama classes will be no larger than 0.75 square metre and no longer than 1.50 metres.

### BADGES FOR 25 YEARS CONTINUOUS MEMBERSHIP

Badges will now be made for all members who want them. They are made so that the wording '25 YEARS CONTINUOUS MEMBERSHIP' can be removed for the members who do not qualify for this.

### CLUB WEB SITE

Ian Cousins was thanked for his work on the updates web site and members are encouraged to take a look at what Ian has achieved.

### MODEL CLUBS IN GENERAL

It would appear that there is an enormous number of clubs in our field throughout the country and it is a pity we can not all work together as we have a common interest. Southland has pointed out there are now 5 clubs in Invercargill and most of them have been formed by break-away members from the New Zealand Model Vehicle Club Inc.

The subject of opening the Club to other interests is covered on page 5

This covers the main points from the Annual General Meeting and if members wish to know more; then contact your local Delegate who has a copy of the minutes.

*Eric Brockie*

## LETTER

Anybody checked out the 'New, Improved & Heaps Better' Club Website yet?? No? – Why not? – It's fantastic!! Ian has done us all proud with all the work he's done. It's a lot better laid out and way easier to navigate around. Please, please, please do visit soon, and even better, I reckon it would be great if you have previously sent an article in to Ron, please also send a copy to Ian as well – either in the mail or electronically, so he can post it to the appropriate spot on the Website. Oh - did I mention that it's 'New, Improved & Heaps Better' too?? Sorry – but hopefully you all get the message. Please do visit soon [www.nzmvc.in-nz.com](http://www.nzmvc.in-nz.com) and let's hear what you think

*Shayne Spicer*

## BRANCH NEWS

### Southland Branch Report for August 2009

It has been decided to accept the invitation to display at the Great Little Train Show which is to be held in the big stadium at Surrey Park. Final details to be dealt with at the September meeting of the Branch.

The Wanaka trip is postponed until a suitable date can be finalised.

Graeme Robertson advises he is now an agent for Brooklin Models so contact him to see if he can get items you are seeking.

Roger Larsen advises he will not stand again for the position of Branch Chairman and Delegate. nominations for the position will be called for.

A reminder was made regarding the Club's website which is having new information added all the time. People with articles that have been published in the mag (locally or Nationally) or those with new articles were invited to send copies to Ian Cousins in Wellington for inclusion on the website. Unpublished items will be forwarded to the Editor of the National mag for publication. It was noted that the website is not seen as a replacement for the Club's National Magazine but is seen as an adjunct to the magazine that has the potential of a wider "internet" audience.

### **Southland Branch Meeting: July 2009**

Meeting was brief due to a number of apologies received from local members but was boosted later by the arrival of a group of members and potential members from Gore, Mataura and Wyndham.

Some discussion held around the subs and it was explained subs had remained the same - the "increase" this year was due to the change in the Club's financial year necessitating an extra payment to cover the period between the end of the old financial year and the start of the new financial year.

A question and answer session was held on the Club being 40 years old:

#### ***How big was the Club then?***

**Fred Hawkes replied:** Not much different to today with a local membership of about 20 although then about 2/3 would have been kit builders. These kit builders were really good and standards were high.

#### ***And it helped being in a Club?***

**FH:** you almost had to be to have access to information on what was coming on the market, be it diecast or kits. The members in the Club had the overseas and local contacts to find out what was coming.. you found out either by word of mouth or in a section in the Newsletter called "The Garage".

#### ***Where did that name come from?***

**FH:** I don't know - that is just what it was called. It may have been something to do with the fact that that was where many members kept their models. What happened was that any member who heard of something would put a notice in that section for the benefit of other members. Also members phoned each other if something was coming. There was more club camaraderie in those days. It was more often the fun of the chase as everything was comparatively scarce, especially with diecast. And a lot more swapping occurred.

#### ***What was actually about in diecast in those days?***

**FH:** Not much, which is why so many of the Club were kit builders. If you wanted something you just had to make it as there was no other way of getting it. Dinky, Matchbox and Fun Ho! were about and the quality was good. There were others too some of which are still

about today. sometimes the quality was Ok, sometimes it was trashy. sometimes you had to read the base in order to find out what the vehicle was supposed to be. Some of the makes still around are producing really good models but in those days they were a bit rough with overspray and flash, etc. They present their modern models much classier now and the quality of diecast has just gone up and up, with the help of technology. Our thanks to Fred for his answers!

### **Otago Branch – Model Expo 2009**

August 3<sup>rd</sup> – 15<sup>th</sup> this year, was Otago Branch's annual pilgrimage to the Dunedin Community Gallery, where we staged our combined displays, the Model Car Festival and the Model Expo. The main theme this year was Transport Through the Ages and dealt with all the modes of transport from before 1900 up to the present day, including any horse-drawn items through to steam, rail and everything in between you can think of. This also extended to Lunar transport, timely because the show coincided with the 40<sup>th</sup> anniversary of the first moon landing in 1969. This was a minor theme for the show with a photographic display of many moon landing photos, and copies of newspaper headline pages of the day.

Another theme incorporated, was a pictorial display of the historic Dunedin Cable Cars, Electric Trams and early Passenger Transport (buses) Companies which comprised several hundred photos. Combined with all this lot were around 1700 models, around 300 for the competitions (Model Car Festival) and the rest for display. So as you can see in the photos, a very impressive display.

Of great interest to me, being a Model Building/Diorama type person was the stunning diorama of the Tramcars all set on a scene representing Dunedin's North East Valley. These Tramcars and indeed the whole diorama, buildings included, were all totally scratch-built in 1:32 scale. It was a real joy to see that such workmanship is still alive and well in suburban New Zealand. Check out the photos and you can start to appreciate the detail in the Tramcars even down to the upholstery on the seats and the passengers on board, and then notice the small details – the horse drawn buggy, the lady with the pram by the Post Office, what about the man & his bicycle by the Fruiterers shop.

The rest of the display featured the Transport Through the Ages and had models grouped into the decades they belonged to – '40's, '50's, '60's and so forth. As can be seen in the photos, there was a great spread of models, and although a couple of groups were a bit lean – '80's & '90's, there were probably a lot of these models that were entered in the competition classes.

As always credit is due to the whole team involved in the Otago Branch display this year. Not only do they help to set up and pack down the whole event, they obviously supply all the models and most of the memorabilia, but many also spent their own time in the evenings helping to man the show and to talk to and answer any questions that people may have had. This is what makes these events so worthwhile. This year's Trams and Cable-car photos and display seems to have struck many a chord among the more senior visitors, many of whom could well remember either working on and or travelling around the city in decades gone by

Well done to the Otago Branch on another successful event

*Shayne Spicer*

# MODEL CAR FESTIVAL PHOTOS



Congratulations to all those involved in putting on such a fine display at the Model Car Festival and Model Expo for 2009 held in Dunedin

Photos by Shayne Spicer

## "NEW ZEALAND MODEL VEHICLE & COLLECTIBLES CLUB"

Members that attended the Annual General Meeting in Invercargill felt the suggestion of a direction change for the Club was of importance to all members and you will be aware of the above subject because it was detailed in a letter and questionnaire that was sent to you back in June and replies were returned to me by the end of July.

The replies came from 34% of the membership which is just over a third of the membership. A fairly definite reply was received to most of the questions asked. You may think that this is not a big response but 10% of a membership of a voluntary organisation is considered to be a reasonable reply to a questionnaire or for attendance at functions any group organises.

I collated the replies and forwarded details to members of the National executive and asked for a reply to be sent back by the end of August. I asked members to consider the replies that I circulated and about any action we should take if any considering the replies received.

I received responses from six members of the National Executive and all six stated that because of the replies received in relation to the questionnaire; no further action should be taken by the National Executive. The replies showed there was some concern by the members about the possible changes and the feeling in general was quite strong particularity in relation to a change of name for the Club or the possibility of losing the Club identity.

These general comments made were:

- ◆ Doll collectors and other collectors are most likely already in other clubs suited to them. Other clubs will be offended at us trying to steal their members.
- ◆ Our members are there because of an interest in cars.
- ◆ Many members probably have other interests but this Club is for those with model vehicle interests.
- ◆ We have to accept that the collecting of models has changed and it is much easier to obtain models.
- ◆ There seems to be less interest in kitsets possibly because the quality of diecasts has improved greatly.
- ◆ Collectors seem to be more aware of security.
- ◆ What ever we could do for collectors of knitting needles etc., I cant imagine and what they could do for model car collectors is beyond imagination.

This is a report on the subject as detailed and to advise there will be no change to either the name of the Club or the other subjects raised.

**NO CHANGE: THE CLUB WILL CONTINUE AS AT PRESENT**

Eric Brockie, National Secretary, N.Z.M.V.C. Inc

## LETTER #2

Dear Editor,

Regarding the possibility of opening up the Club to other collecting interests:

What will it achieve? Greater numbers of people who don't attend meetings, more who don't write articles to the newsletter, more newsletters to be printed, and will it be more difficult to hold an AGM? Will there be enough to form a quorum...

There appears to be some concern that the Model Vehicle Collectors Club will lose the identity that has been developed over the last 40 years....so what?? We are quite prepared for the Salt and Pepper Shaker, Barbed Wire, Teddy Bear, Feather and Pen Collectors to give up their identity to be referred to as "collectors". - Do they not have the right to be known for what they are?

The reason why Truck builders, Military builders and Aeroplane Builders are thin within our membership is because they are catered for by other clubs specific to their interest, i.e. New Zealand Model Truck Association ,and /or I.P.M.S. When the car builders/collectors split from the Otago branch of I.P.M.S., did they rush to join our club? They simply formed their own called the "Roaring 40's"

If people want to join our club, they will join, but only if they have an interest in Model Vehicles. Therefore we must keep our identity and keep it in the spotlight. Stand up, be proud to be member. I am, I just haven't told many !!!

My vote is for the status quo to remain.

Regards  
John Stanley.  
Member 231.

*Thanks John. As you can see by Eric's announcement on page 10, the matter can now be laid to rest.. I guess the serious stuff has taken up enough of the newsletter, so here are some jokes sent in:*

It's a well known fact that the part of the car that causes the most accidents is the nut behind the wheel.

The new trainee at the garage arrived with all his tools eager to be let loose on a car. The boss looked at him solemnly. "First things first lad, you have to master the basics. Now then; open the bonnet, stare, lean forward, stare sigh and then say Oh Dear Oh Dear"

Went past a car sales the other day that had some great cars in it. Sign said Come on in: They are bigger than ever and they last a lifetime! Trouble was they were talking about the payments!

## EMEK MODEL TRUCKS

Some time ago I had an article about EMEK Models in Miniature Auto when I enquired whether any other member had any in their collections or could tell me anything about the models.

I received no reply to my query but I have now found out some more information because I have purchased another EMEK Model from an importer.

They are completely made of plastic in 1:25 scale and made in Finland and I now believe are promotional models. Promotional models have been around for many years, usually made of plastic, and not what you would call highest quality but have been collectible models for many years.

If my memory is correct the late Ron Welford, who was one of the foundation members of our Club, had a very nice collection of promotional models

The EMEK Models are not a cheap model because depending on where you buy them they retail anywhere between \$90-00 and \$140-00 however if you are a collector of promotional these models could be worth adding to your collection.

The model I have received is number 1857475 of a Scania High Line timber truck with a cabin crane on the truck unit. Colour of the model received has a white cab with black chassis and a grey framework to hold the logs. Wheels on the truck are single axle on the front and double duals on the back with a closed crane cab on of the truck with a two piece folding arm and timber grab for loading the logs.

Trailer has double axle duals on both the front and back and has a load of about 30 short logs on board.

Moulding of the plastic is not as good as the moulding of the previous model I reviewed but the plastic cab being in white seems to show more imperfections than if it was in a darker colour. Cab doors do not open.

Model is over 33 ins. long and the packaging appears to be heavy corrugated cardboard with a heavy Perspex front to the packaging and this is held in a plastic frame. Being in 1:25 scale the model is quite large but not what I would call a high quality model but being in plastic it would be an acceptable model if you were into collecting promotional models or loggers.

If you have some of these EMEK MODELS in your collection what about writing to Miniature Auto with details about your model or even if you have other promotional models in your collection these would also be good to read out in Miniature Auto.

Eric Brockie



## DINKY TOY EVALUATOR

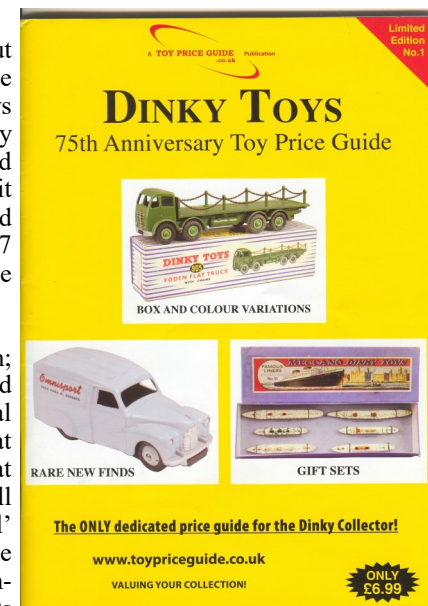
Having been a Dinky Toy fan from 'way back'; I have got to a stage in my collecting where I want information on variations (the gaps in my collection so far are now very expensive, so in effect looking for excuses to double up on some of the ones I already have). Thereby shows up a problem as I find that the literature on the subject so far just glosses over most of the variations. This is surprising as other makes such as Matchbox seem to have every minute variation documented. As a result of the quest, I seem to have bought just about every book on the market that claims to be an authority. The only exception was one (evaluator) a while back that gave ridiculously high prices for mundane issues and claimed faults as being much more valuable (like flaws in stamps), which they aren't. However it did have one good point (also taken from the stamp world) where several columns on the price side where it was divided into used, mint and mint boxed.

There have been many recent books on Dinky Toys but they all seem to use each other as reference with the same errors carried through. When I saw "Dinky Toys 75<sup>th</sup> Anniversary Toy Price Guide" compiled by Toy Price Guide; I thought it seemed authoritative as it used auction house data as the basis. On the cover it claimed "Box and Colour Variations", "Rare Find" and "Gift Sets" it showed promise, so since it was only £7 plus post from the UK, it wasn't going to break the bank.

When the book arrived and after a quick scan through; it was obvious that it was not the publication I had hoped for. As I was not really interested in the actual prices quoted (more about that later); I had hoped that variations would be fully listed, but unfortunately that was not the case. Not only were most of the well known variations missed out, some of the 'normal' issues were as well (missed catalogued items). On the other hand, some of the few listed variations were incorrect or unverified – like listing some of the early 70s cars as having plastic speedwheels when they did not.

The prices quoted are based on realised auction prices, which is OK in a way as it might give a guide to how much to expect if selected items were sold, but like all auction prices, they can vary greatly. Consequently the prices quoted are quite low compared with other evaluators. Anyone who watches Antiques Road Show will know they have several pricing methods – auction (lowest), insurance and retail.

'Box Variations' as claimed are simply box types used by Meccano over the years, not actual model box variations (some had 4 or 5 over the production). I do take exception to the claim that the (mint) box is worth 55% of the quoted price, although this may be factual, it



seems well out of kilter with logic. OK, in theory boxes are rarer than the toys as they were normally thrown away and those that were kept got easily damaged – but they are also very easy to reproduce. There are some excellent reproductions on the market which are supposed to be marked as such, but I am sure ‘clever’ people could circumvent this. The toy on the other hand would require thousands of dollars worth of tooling to reproduce it in mazak (white metal is easier and cheaper but also easily detectable). The other point is the blanket 55% for the box (one size fits all) which includes the late issue with the really naff boxes which in reality aren’t worth 10% of the value.

Still waiting for the definitive Dinky Toy book!

Ron Ford

## WHAT DO YOU COLLECT?

Discussion took place recently on accepting collectors of other items into the Club membership and it was raised by one or two members about other models planes boats etc. and not just the teddy bear type of collection.

One member commented that at one point we allowed those with interests in SHIPS, BOATS, PLANES etc but no one would suggest that the Club does anything to support members with those interests.

I would not altogether agree with those comments because while I can not speak on the position in other branches within the Club the Otago Branch competitions both in Dunedin and Alexandra and the competitions held in conjunction with the Annual General Meeting do have classes for ships, boats and planes within the kitset classes.

In the Otago Branch for instance we have a class for any other model in our diecast section which means you could enter a tractor, train or aeroplane for instance which is not covered by our other classes and this has happened on many occasions.

How do we promote any one particular part of our hobby because the interests of our members change from year to year as to what they collect or what they build. I remember in the early years we would not accept members into the Club who were interested in Slot Cars unless they removed the motors from them however I know that some members now collect slot cars and have them as a part of their collections but do not race them but would it matter if they did.

We have a couple of members in Dunedin who collect trains either clockwork, electric or both but they do not have an interest running the trains on a layout they only collect them the same as they do diecast models of trucks, cars or bulldozers etc.

I do agree that we may not do anything to promote boats, ships or plane models in particular but then again do we do any specific promotion for hot rods or motorcycles for instance other than include a class for them in our competitions.

Over the years interests of members change and I know that in the Otago Branch competitions over the years we have had a number of entries into the classes for boats, planes ships

and even military vehicles but certainly we did get entries into those particular fields both for KITSET BUILDERS & DIECAST COLLECTORS.

One member raised the question of collectors of remote controlled cars being in the Club and I think we may already have some of those collectors in the Club now.

My feeling would be that no matter what type of vehicle you collect, CARS< TRUCKS< TRAINS< BOATS< PLANES< SPACE SHIPS< TANKS< BUSES< TRAM CARS< MOVIE MODELS< MOTORCYCLES< SLOT CARS< RADIO CONTROLLED< TRACTORS< CRANES, HOT RODS, CUSTOM CARS or BULLDOZERS they should be welcome to join the Club.

Please write to the Editor about any of the above and if you have any ideas on promoting a particular facet of the Club let me know.

Eric Brockie.



## FAREWELL CHRIS

Long time Members will be as shocked as I was when I heard of the untimely death of our Honorary Life Member, Chris Purcell (Wellington Branch).

Chris was heavily involved with the Club in the formative years and held many posts in the Executive including President and treasurer. Although he did not officially hold the editorship of Miniature Auto; he and his wife Bev (also a past member) did much of the typing and layout of the newsletter at a time when it was done literally ‘cut and paste’ construction. Chris also wrote the Cobra column featuring model trucks – mainly kit built. He was also responsible for sorting out the financial matters of the Club and put them back on track. This skill was also used in other organisations Chris belonged to.

Chris’s modelling interests were quite varied. Firstly, he collected Matchbox Yesteryear and other similar items – had a cupboard full of unmade kits and quite an extensive Märklin HO collection.

Chris was involved in other organisations; most notably the Judo Federation where he rose to take up executive status in the Commonwealth and many tributes flowed at his very crowded service from African, Asian and European Commonwealth countries; such was Chris’s stature. Another organisation Chris was involved in was the YMCA, where he again rose to the challenge of organisation – this time on a National scale. Then he was a Lodge member. It is no wonder that he had little time for hobbies.

He was always ready to help his friends and even wired our house extension.

Chris will be greatly missed and our condolences go out to his family

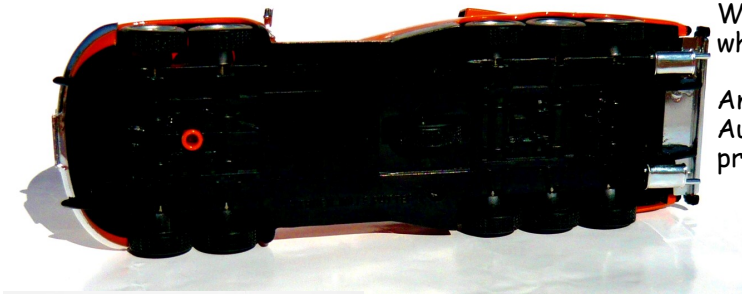
Ron

## WHAT IS IT?



What is this vehicle and  
what is it used for?

Answers to Miniature  
Auto and win a small  
prize!



Mail or e-mail you answer before the 30th  
November 2009.

Easy as??

Wanted wanted Wanted wanted Wanted wanted  
Kitset News,  
Diecast News.  
Any Hobby News whatsoever!